

## Certificate of Analysis

Product:	Rabbit anti-Llama IgG (H&L), HRP Conjugate
Part Number:	RbxLI-003-DHRPX
Lot Number:	77-9-013120
Amount:	1.0 mg of lyophilized antibody (E <sup>1%</sup> at 280 nm = 13.0) (Product has been overfilled to ensure maximum recovery)
Label:	Horseradish Peroxidase (HRP)
Form:	Lyophilized
Purification:	Affinity purified using solid phase Llama IgG
Purity:	Affinity purified antibody is ≥ 95 % based on SDS-PAGE
Host:	Rabbit
Immunogen:	Purified Llama IgG, whole molecule (all three isotypes)
Buffer:	10 mM Sodium Phosphate, 0.15 M Sodium Chloride, pH 7.2, 1 % (w/v) BSA, Protease/IgG free
Preservative:	0.1 % (v/v) ProClin 150 – <i>Use of Sodium Azide will inhibit enzyme activity of horseradish peroxidase</i>
Reconstitution:	Rehydrate with 1.1 ml of deionized water. Allow reconstituted product to stand for at least 30 minutes at room temperature prior to dilution. If necessary, centrifuge to remove any particulates. Prepare fresh working dilution daily.
Storage:	Store lyophilized material at 2-8 °C. For long term storage after reconstitution, dilute with 50 % glycerol and store at -20 °C as a liquid.
Shelf Life:	1 year from date of receipt
Specificity:	Based on IEP, this antibody reacts with: <ul style="list-style-type: none"><li>• heavy (γ) chains on Llama IgG</li><li>• light chains on all Llama immunoglobulins</li></ul>
Cross Reactivity:	Based on IEP, no reactivity is observed to: <ul style="list-style-type: none"><li>• non-immunoglobulin Llama serum proteins</li></ul>
Country of Origin:	Rabbit antiserum was obtained from healthy animals of US origin and under the care of a registered veterinarian.
Note:	This conjugate was prepared using Part # RbxLI-003-D, lot # 27-169-011614.
Applications:	This conjugate is suitable for all immunoassay applications. The optimal working dilution should be determined by the investigator. Suggested starting dilution(s): <ul style="list-style-type: none"><li>• 1:500-1:5,000 for Immunohistochemistry</li><li>• 1:200-1:5,000 for ELISA/Western blot</li></ul>
Disclaimer:	<i>For in vitro Laboratory Use Only.</i> Not for diagnostic or therapeutic use. Not for human or animal consumption. Suggested applications of our products are not recommendations to use our products in violation of any patent or as a license under any patent of ImmunoReagents, Inc.

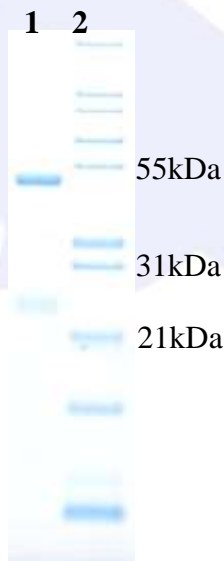
**Product may not be resold or modified for resale without prior written approval of ImmunoReagents, Inc.**

## Testing Results

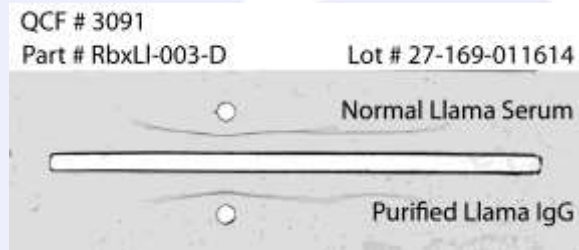
**PRODUCT:** Rabbit anti-Llama IgG (H&L), HRP Conjugate  
**PART NUMBER:** RbxLI-003-DHRPX  
**LOT NUMBER:** 77-9-013120

<u>TESTS</u>	<u>SPECIFICATIONS</u>	<u>RESULTS</u>
Appearance:	Reddish powder	PASS
Purity:	Two predominant bands at 50 and 24 kDa based on SDS-PAGE	PASS
Specificity	Based on IEP, his antibody has precipitin bands against: <ul style="list-style-type: none"> <li>• heavy (<math>\gamma</math>) chains on Llama IgG</li> <li>• light chains on all Llama immunoglobulins</li> </ul>	PASS PASS
Cross Reactivity	Based on IEP, no precipitin bands are observed to: <ul style="list-style-type: none"> <li>• non-immunoglobulin Llama serum proteins</li> </ul>	PASS
ELISA:	Dilution giving $A^{450}$ reading of $\geq 1.0$ when tested against Llama IgG (H&L) coated at 2 $\mu\text{g/ml}$	1: 123,000

### SDS-PAGE



### Immunoelectrophoresis (IEP)



- 1) RbxLI-003-D, Lot # 27-169-011614
- 2) Mol Weight Standard

Date: February 7, 2020

Signature:   
 Quality Control