

Certificate of Analysis

Product: Goat anti-Llama IgG (H&L), Affinity Pure

Part Number: GtxLl-003-D

Lot Number: 79-153-092121

Concentration: 10.0 mg/ml (E^{1%} at 280 nm = 13.0)

Amount: 2.0 mg

Form: Clear, colorless liquid, 0.2 µm filtered

Purification: Affinity purified using solid phase Llama IgG

Purity: ≥ 95% based on SDS-PAGE

Host: Goat

Immunogen: Purified Llama IgG, whole molecule

Buffer: 10 mM Sodium Phosphate, 0.15 M Sodium Chloride, pH 7.2

Preservative: 0.05 % (w/v) Sodium Azide

Storage: 2-8 ° C

Expiration Date: September 21, 2024

Specificity: Based on IEP, this antibody reacts with:

- heavy (γ) chains on Llama IgG
- light chains on all Llama immunoglobulins

Cross Reactivity: Based on IEP, no reactivity is observed to:

- non-immunoglobulin Llama serum proteins

Country of Origin: Goat serum was obtained from healthy animals of US origin and under the care of a registered veterinarian.

Applications: The optimal working dilution should be determined by the investigator.
Suitable for use in: ELISA, IP, IDA, WB, IHC

Disclaimer: *For in vitro Laboratory Use Only.* Not for diagnostic or therapeutic use. Not for Human or animal consumption. The proper selection and use of our products is the sole responsibility of the end user, and therefore we can offer no guarantee to a specific experimental outcome. Suggested applications of our products are not recommendations to use our products in violation of any patent or as a license under any patent of ImmunoReagents, Inc.

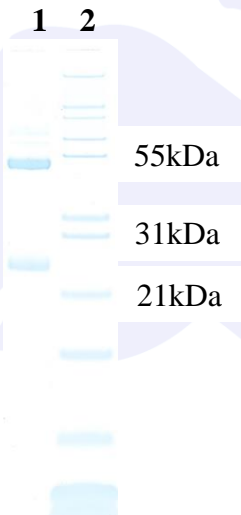
Product may not be resold or modified for resale without prior written approval of ImmunoReagents, Inc.

Testing Results

PRODUCT: Goat anti-Llama IgG (H&L), Affinity Pure
PART NUMBER: GtxLI-003-D
LOT NUMBER: 79-153-092121

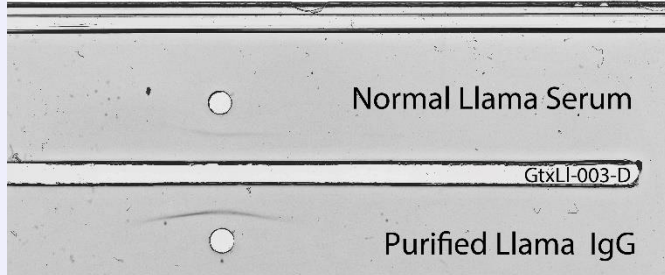
<u>TESTS</u>	<u>SPECIFICATIONS</u>	<u>RESULTS</u>
Appearance:	Clear and Colorless	PASS
Purity:	Two predominant bands at 50 and 24 kDa based on SDS PAGE	PASS
Specificity:	Based on IEP, this antibody has precipitin bands with: <ul style="list-style-type: none">heavy (γ) chains on Llama IgGlight chains on all Llama immunoglobulins	PASS PASS
Cross Reactivity:	Based on IEP, no precipitin bands are observed to: <ul style="list-style-type: none">non-immunoglobulin Llama serum proteins	PASS

SDS PAGE



Immuno-electrophoresis (IEP)

IEP for Goat anti-Llama IgG (H&L), Affinity Pure
Part# GtxLI-003-D Lot# 79-153-092121



- 1) GtxLI-003-D, Lot # 79-153-092121
- 2) Mol Weight Standard

Date: September 24, 2021

Signature: _____

Lee Berdeman, Ph.D.
Quality Control