

## Certificate of Analysis

Product: Goat anti-Llama IgG (H&L), Affinity Pure

Part Number: GtxLI-003-D  
Lot Number: 41-19-060614  
Concentration: 8.83 mg/ml (E<sup>1%</sup> at 280 nm = 13.0)  
Amount: 1.0 mg  
Form: Clear, colorless liquid, 0.2 µm filtered  
Purification: Affinity purified using solid phase Llama IgG  
Purity: ≥ 95 % based on SDS-PAGE  
Host: Goat  
Immunogen: Purified Llama IgG, whole molecule  
Buffer: 10 mM Sodium Phosphate, 0.15 M Sodium Chloride, pH 7.2  
Preservative: 0.05 % (w/v) Sodium Azide  
Storage: 2 - 8 °C  
Expiration Date: October 28, 2022

Specificity: Based on IEP, this antibody reacts with:

- heavy (γ) chains on Llama IgG
- light chains on all Llama immunoglobulins

Cross Reactivity: Based on IEP, no reactivity is observed to:

- non-immunoglobulin Llama serum proteins

Country of Origin: Goat serum was obtained from healthy animals of US origin and under the care of a registered veterinarian.

Applications: Suitable for use in: ELISA, WB, IHC, ICC, CL, FACS, IM, IF  
The optimal working dilution should be determined by the investigator.

Disclaimer: *For in vitro Laboratory Use Only.* Not for diagnostic or therapeutic use. Not for human or animal consumption. The proper selection and use of our products is the sole responsibility of the end user, and therefore we can offer no guarantee to a specific experimental outcome. Suggested applications of our products are not recommendations to use our products in violation of any patent or as a license under any patent of ImmunoReagents, Inc.

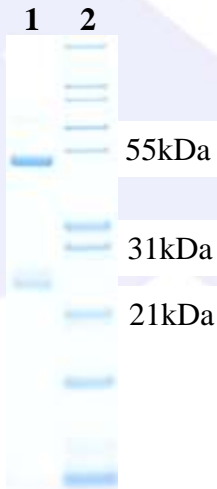
**Product may not be resold or modified for resale without prior written approval of ImmunoReagents, Inc.**

## Testing Results

**PRODUCT:** Goat anti-Llama IgG (H&L), Affinity Pure  
**PART NUMBER:** GtxLI-003-D  
**LOT NUMBER:** 41-19-060614

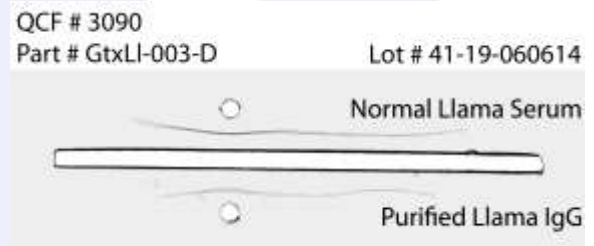
<u>TESTS</u>	<u>SPECIFICATIONS</u>	<u>RESULTS</u>
Appearance:	Clear, colorless liquid	PASS
Purity:	Two predominant bands at 50 and 24 kDa based on SDS-PAGE	PASS
Specificity:	Based on IEP, this antibody has precipitin bands with: <ul style="list-style-type: none"><li>heavy (<math>\gamma</math>) chains on Llama IgG</li><li>light chains on all Llama immunoglobulins</li></ul>	PASS PASS
Cross Reactivity:	Based on IEP, no precipitin bands are observed to: <ul style="list-style-type: none"><li>non-immunoglobulin Llama serum proteins</li></ul>	PASS

### SDS PAGE



- 1) GtxLI-003-D, Lot # 41-19-060614
- 2) Mol Weight Standard

### Immunoelectrophoresis (IEP)



Date: October 28, 2020

Signature: \_\_\_\_\_

  
Quality Control