

Certificate of Analysis

| | |
|--------------------|--|
| Product: | Goat anti-Llama IgG (H&L), Affinity Pure |
| Part Number: | GtxLI-003-D |
| Lot Number: | 90-120-082321 |
| Concentration: | 10.0 mg/ml (E ^{1%} at 280 nm = 13.0) |
| Amount: | 1.0 mg |
| Form: | Clear, colorless liquid, 0.2 µm filtered |
| Purification: | Affinity purified using solid phase Llama IgG |
| Purity: | ≥ 95% based on SDS-PAGE |
| Host: | Goat |
| Immunogen: | Purified Llama IgG, whole molecule |
| Buffer: | 10 mM Sodium Phosphate, 0.15 M Sodium Chloride, pH 7.2 |
| Preservative: | 0.05 % (w/v) Sodium Azide |
| Storage: | 2-8 °C |
| Expiration Date: | August 23, 2024 |
| Specificity: | Based on IEP, this antibody reacts with: <ul style="list-style-type: none">• heavy (γ) chains on Llama IgG• light chains on all Llama immunoglobulins |
| Cross Reactivity: | Based on IEP, no reactivity is observed to: <ul style="list-style-type: none">• non-immunoglobulin Llama serum proteins |
| Country of Origin: | Goat serum was obtained from healthy animals of US origin and under the care of a registered veterinarian. |
| Applications: | The optimal working dilution should be determined by the investigator. Suitable for use in: ELISA, IP, IDA, WB, IHC |
| Disclaimer: | <i>For in vitro Laboratory Use Only.</i> Not for diagnostic or therapeutic use. Not for Human or animal consumption. The proper selection and use of our products is the sole responsibility of the end user, and therefore we can offer no guarantee to a specific experimental outcome. Suggested applications of our products are not recommendations to use our products in violation of any patent or as a license under any patent of ImmunoReagents, Inc. |

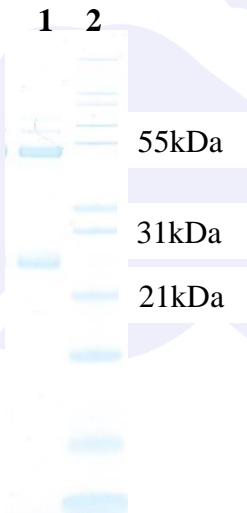
Product may not be resold or modified for resale without prior written approval of ImmunoReagents, Inc.

Testing Results

PRODUCT: Goat anti-Llama IgG (H&L), Affinity Pure
PART NUMBER: GtxLI-003-D
LOT NUMBER: 90-120-082321

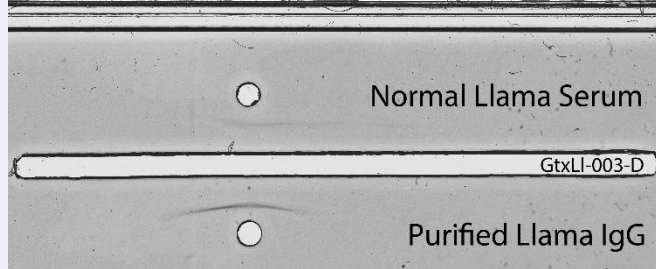
| <u>TESTS</u> | <u>SPECIFICATIONS</u> | <u>RESULTS</u> |
|-------------------|--|----------------|
| Appearance: | Clear and Colorless | PASS |
| Purity: | Two predominant bands at 50 and 24 kDa based on SDS PAGE | PASS |
| Specificity: | Based on IEP, this antibody has precipitin bands with: <ul style="list-style-type: none">heavy (γ) chains on Llama IgGlight chains on all Llama immunoglobulins | PASS PASS |
| Cross Reactivity: | Based on IEP, no precipitin bands are observed to: <ul style="list-style-type: none">non-immunoglobulin Llama serum proteins | PASS |

SDS PAGE



Immuno-electrophoresis (IEP)

IEP for Goat anti-Llama IgG (H&L), Affinity Pure
Part# GtxLI-003-D Lot# 90-120-082321



- 1) GtxLI-003-D, Lot # 90-120-082321
- 2) Mol Weight Standard

Date: August 30, 2021

Signature: _____


Quality Control